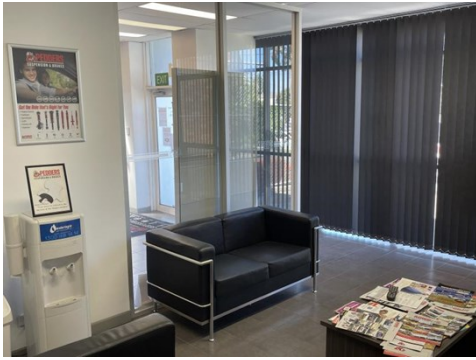


For Lease

AREA m²: 539 RENT PA: \$67,500

LAWSON
REAL ESTATE




1 HARKER STREET, BURWOOD 3125

This one won't last!

DESCRIPTION:

- + includes office showroom
- + easy access
- + Popular and sought after industrial position
- + Excellent access to the CBD and surrounding eastern and south eastern suburbs
- + surrounded by service industries
- + Available Jan '22

- Tightly held location

Premises:	
Office Area m ² :	60
Warehouse Area m ² :	479
Total Area m ² :	539
Rent:	\$67,500
Estimated Outgoings:	\$9,000
GST:	All prices are exclusive of GST
Car Spaces:	4
Council:	Whitehorse City
Zoning:	IN1Z Industrial 1 zone
Contact:	
	Steven Lawson 0418 536 003 steven@lawsonrealestate.com.au

www.lawsonrealestate.com.au

P 03 9562 7633 | A 1/1 Hardner Road, MOUNT WAVERLEY, VIC 3149

IMPORTANT: The Information contained within this listing has been obtained from sources believed reliable. Notwithstanding, Lawson Real Estate has not verified the information contained herein and makes no guarantee, warranty or representation (express or implied) about the information contained herein. Subject to any unexcludable legislative provisions and to the full extent permitted by law Lawson Real Estate accepts no responsibility or liability (including in negligence) for the information contained herein. Any projections, opinions, assumptions or estimates used are for example only and do not represent the current or future performance of the property. You and your advisors should conduct a careful, independent investigation of the property to determine to your satisfaction the suitability of the property for your needs. For terms of our Privacy policy please refer to the following website www.lawsonrealestate.com.au.